

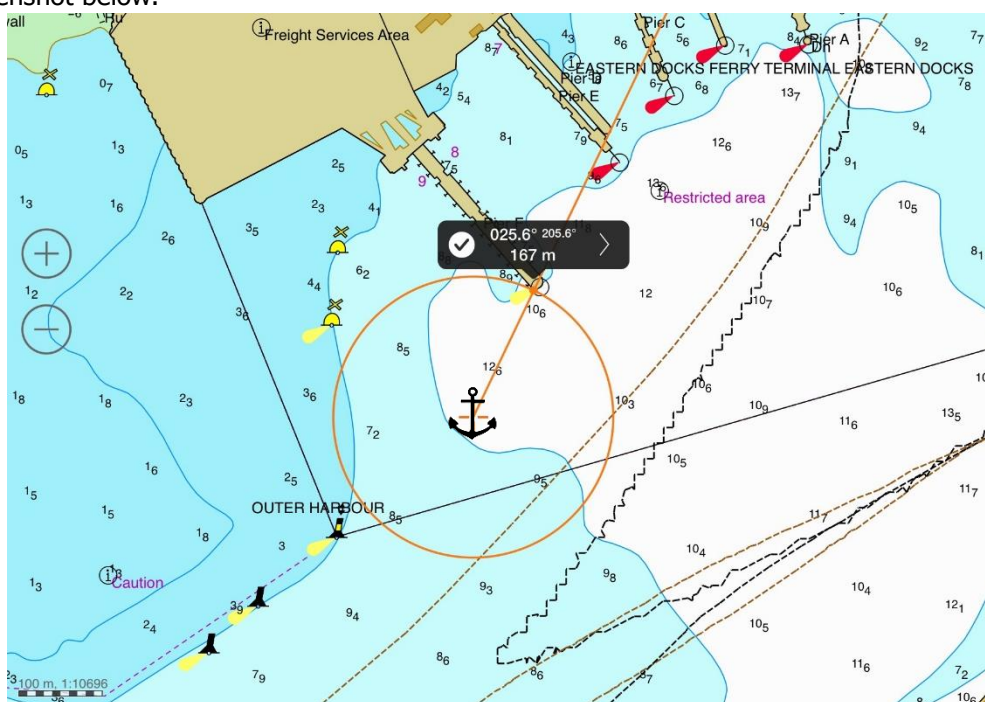


PORT OPERATIONS

Local Notice to Mariners 35/20

Lost Anchor Eastern Docks

Mariners are advised that an anchor has been lost from a ferry in the Eastern Docks whilst manoeuvring for ED9. The approximate position is 51°07.257 N 001°20.02 E as per the screenshot below.



The depth of water on the latest port sounding chart is 11m below CD in that location and the anchor approximately 3m in length, potentially reducing the depth of water to 8m below CD. No anchor chain was lost.

Mariners should use extra caution when using anchors nearby to avoid fouling on this obstruction.

Steve Masters
Harbour Master

10th May 2020

Notices Remaining In Force:

08/19 – Decommissioned mooring equipment

23/19 - DWDR restricted Area

50/19 - Temporary Suspension of the Wick Channel Traffic Lights

68/19 – Structural Damage Pier Bravo

01/20 - Tide buoys (Revised)

16/20 - North East unlighted Buoy off Station

32/20 - Diving Operations ED7 Landward end

33/20 - Over-side Works ED7

35/20 – Lost Anchor Eastern Docks