



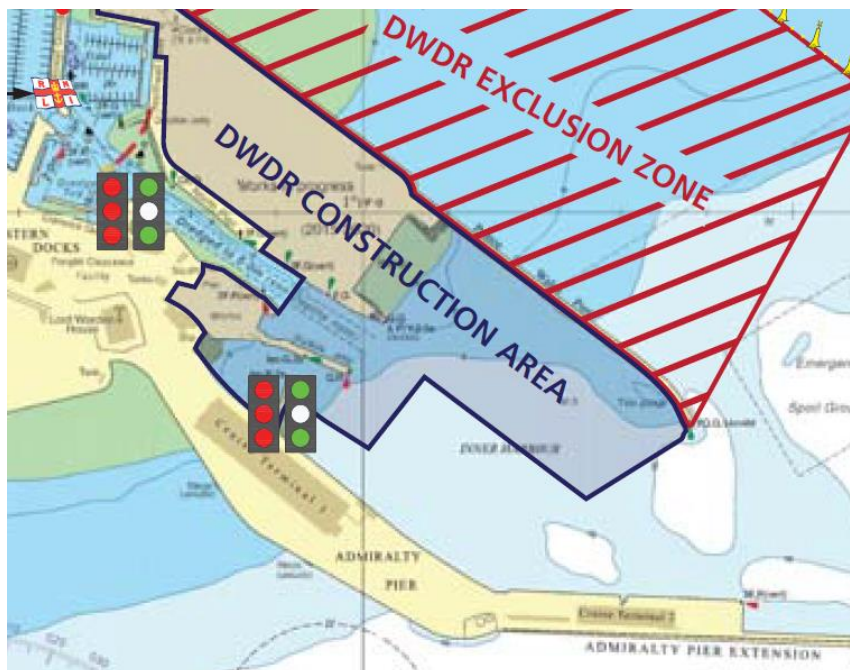
PORT OPERATIONS

Local Notice to Mariners 40/17

Wick Channel Traffic Lights

Mariners are advised that marine traffic lights are now in place to control access and egress through the Wick Channel during the marine civils works which are currently being undertaken as part of the Dover Western Docks Redevelopment project. Dover Port Control will maintain control of the traffic lights and operate them to ensure that the safety of navigation throughout the area is maintained.

At times Dover Port Control may operate a one way traffic system to facilitate the movement of vessels through the Wick Channel. When control of movement through the Wick Channel is required Port Control will switch one set of traffic light to show 3 vertical red lights as depicted on the diagram below and the other set will show Green White Green lights in a vertical line as shown below. Every vessel is expected to contact Port Control before entering the Wick Channel and should follow the instructions issued at all times.



Notices Remaining In Force:

- 70/15 – Pier Alpha Nav Lt reinstated. HIL and Fog Signal Unserviceable (updated)
- 40/16 – Decommissioned Mooring Equipment
- 46/16 – Granville Dock Marina depths
- 17/17 – Installation of DWDR Exclusion Zone
- 18/17 – Dunkirk Jetty Light
- 20/17 - Demolition Works – Dunkirk Jetty
- 21/17 - Dredging & Scour Removal/Pile Cutting – Old Hoverport & Approaches
- 22/17 - West Buoy & Two Pellet Buoys Removed From Outer Harbour
- 25/17 – Piling Operations Berths "A" and "C"
- 32/17 - Wellington Dock Cofferdam and Walkway Marker Buoys
- 34/17 - Heavy Lift Operations being carried out by sheerleg crane barge Enak
- 36/17 – Diving Operations on Dunkirk Jetty
- 37/17 – North East Buoy Temporarily Unlit
- 40/17 - Wick Channel Traffic Lights