

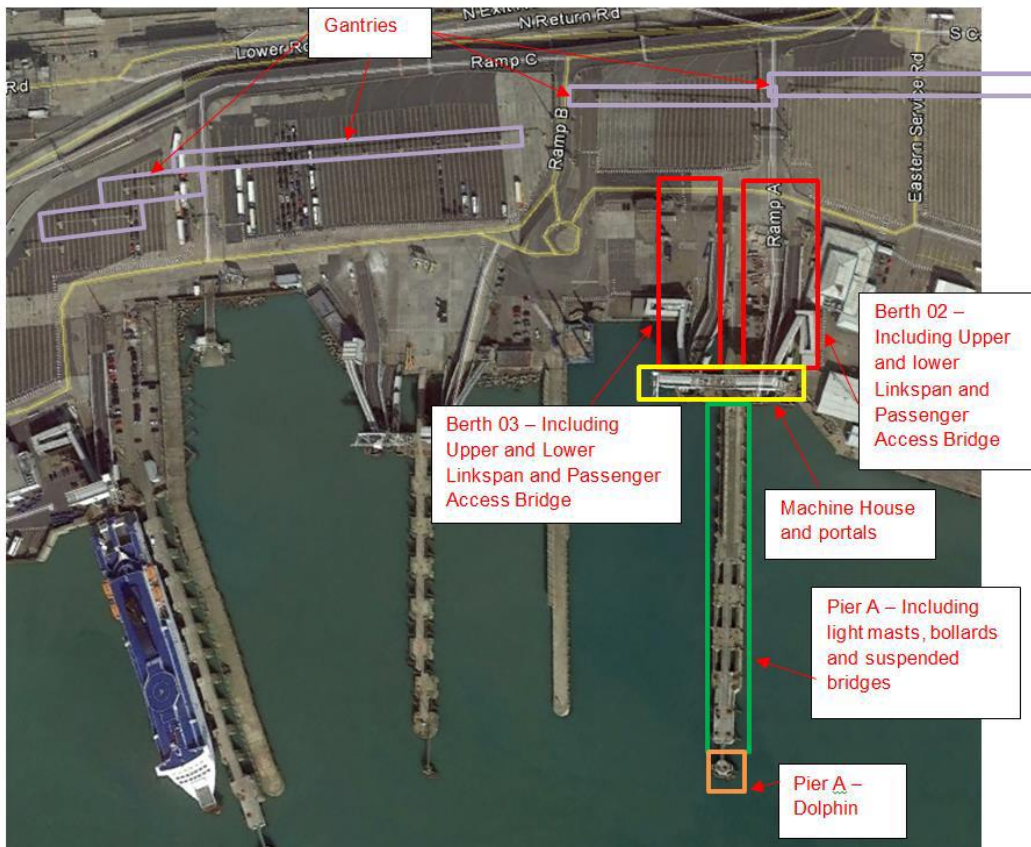


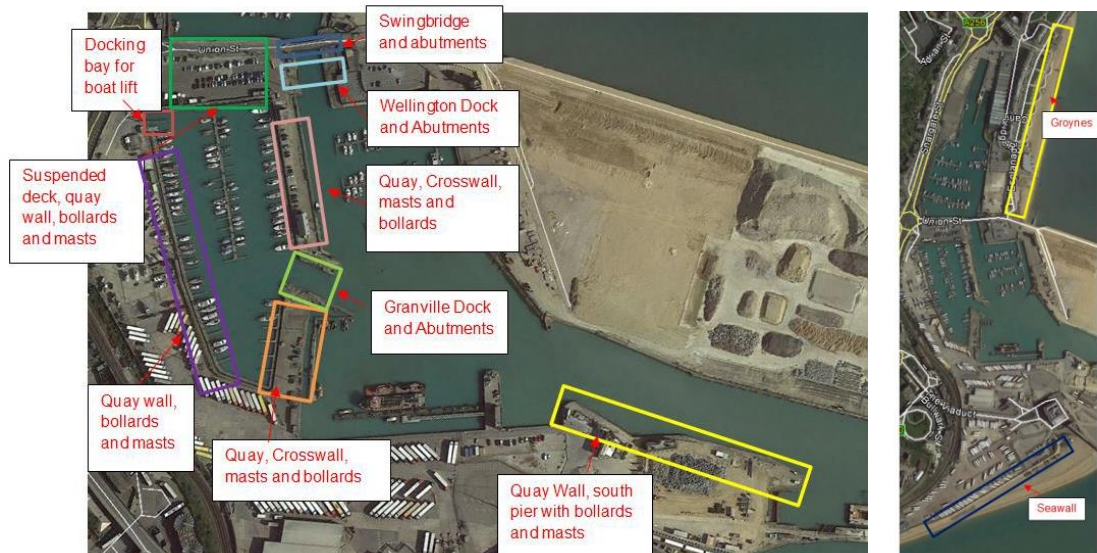
## PORT OPERATIONS

### **Local Notice to Mariners 42/17**

### **Pier A and Western Dock Survey**

Mariners are advised that survey operations will be carried out by Royal HaskoningDHV engineers along Pier A and the Western Dock as indicated below, the vessel Dover Worker will be in attendance during this time. Mariners are requested to pass clear at reduced speed and be guided by Dover Port Control on VHF Ch.74.





Paul Brown  
Harbour Master

28th June 2017

**Notices Remaining In Force:**

- 70/15 – Pier Alpha Nav Lt reinstated. HIL and Fog Signal Unserviceable (updated)
- 40/16 – Decommissioned Mooring Equipment
- 46/16 – Granville Dock Marina depths
- 17/17 – Installation of DWDR Exclusion Zone
- 18/17 – Dunkirk Jetty Light
- 20/17 - Demolition Works – Dunkirk Jetty
- 21/17 - Dredging & Scour Removal/Pile Cutting – Old Hoverport & Approaches
- 22/17 - West Buoy & Two Pellet Buoys Removed From Outer Harbour
- 25/17 – Piling Operations Berths "A" and "C"
- 32/17 - Wellington Dock Cofferdam and Walkway Marker Buoys
- 34/17 - Heavy Lift Operations being carried out by sheerleg crane barge Enak
- 36/17 – Diving Operations on Dunkirk Jetty
- 37/17 – North East Buoy Temporarily Unlit
- 40/17 - Wick Channel Traffic Lights
- 41/ 17 - Diving Operations in the Wellington Docks
- 42/17 – Pier A and Western Dock Survey