



## PORT OPERATIONS

### **Local Notice to Mariners 48/17**

#### **Operation of the Wick Channel**

Mariners are advised that with effect from Wednesday 9th August, all craft transiting the Wick Channel will utilise the new cut through the Dunkirk Jetty.

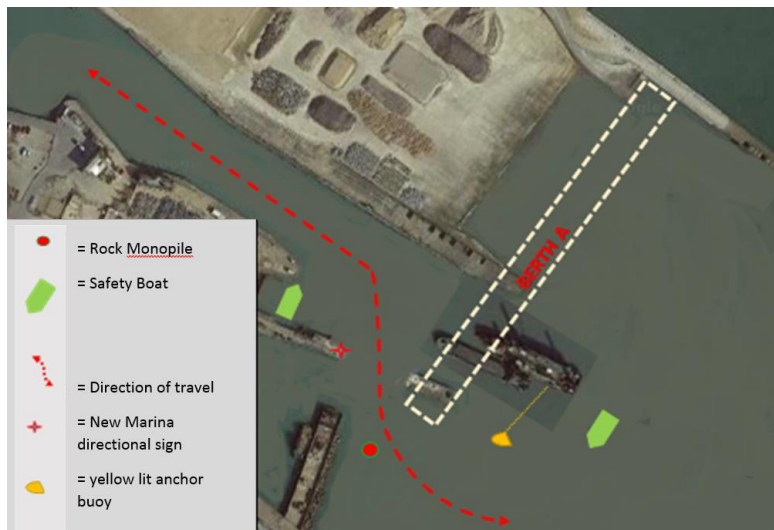
Traffic Management of the new Wick Channel will be the responsibility of Port Control who will operate it as a one-way system; with inbound traffic normally waiting in the vicinity of Cruise Terminal 2 and outbound traffic waiting in the Granville dock/Tidal basin.

Control of the channel will be by traffic lights and verbal instruction from Port Control; the default traffic signal being 3 reds, indicating that vessels should call Port Control before proceeding.

All craft must obtain verbal permission and the correct visual signal before entering the Wick Channel.

During the construction phase when piling is being undertaken two safety boats will be in attendance to assist with traffic management and to issue ear protection, reducing to one safety boat when no piling is taking place.

In the vicinity of the seaward end of the cut, barges secured by anchors marked with yellow lit 'can' buoys may be present. The position of the buoys may affect the safe navigation of vessels using the new Wick Channel and mariners are advised to proceed with caution. At the end of daily piling operations the anchors and their associated buoys will normally be recovered, but if this is not the case Port Control will advise vessels accordingly.



A newly installed red monopile identifies the toeline of the Jet Foil Jetty rock armour to assist vessels to safely navigate through the cut.

A new Marina directional sign has been erected at the north side of the cut. (See overleaf, but note the sign is not to scale)



Lighting columns will be placed on the end of the Jet Foil Jetty to provide illumination throughout the area and new signage will be installed next to the signal lights on the Spur and Jetfoil Jetties. (See below)



Steve Masters  
Harbour Master

8th August 2017

#### **Notices Remaining In Force:**

- 70/15 – Pier Alpha Nav Lt reinstated. HIL and Fog Signal Unserviceable (updated)
- 40/16 – Decommissioned Mooring Equipment
- 46/16 – Granville Dock Marina depths
- 17/17 – Installation of DWDR Exclusion Zone
- 21/17 - Dredging & Scour Removal/Pile Cutting – Old Hoverport & Approaches
- 25/17 – Piling Operations Berths “A” and “C”
- 32/17 - Wellington Dock Cofferdam and Walkway Marker Buoys
- 36/17 – Diving Operations on Dunkirk Jetty
- 40/17 - Wick Channel Traffic Lights
- 46/17 - Diving Operations in the Wellington Docks
- 49/17 - Operation of the Wick Channel